



ARENA TECHNICAL PACKAGE



Curtis Culwell Center

4999 Naaman Forrest Blvd.
Garland, TX 75040

(972) 487-4700

curtisculwellcenter.com

TABLE OF CONTENTS



Contact Information	3
Directions	5
Parking Layout	6
Loading Docks	7
Backstage Information	9
Technical Specifications	15
Rigging Information	16
Power and Equipment	24
Seating Configurations	26
Concourse	35
Local Information	37

CONTACT INFORMATION



Executive Director

John Wilborn

Office: 972-487-4702 | Email: jlwilbor@garlandisd.net

Assistant Director of Event Services and Operations

Troy Thorn

Office: 972-487-4718 | Cell: 214-878-7875 | Email: tthorn2@garlandisd.net

Assistant Director of Sales and Bookings

Kevin Welch

Office: 972-487-4705 | Cell: 214-876-2136 | Email: kswelch@garlandisd.net

Assistant Director of Technology

Debbie Dodds

Office: 972-487-4708 | Cell: 432-294-0035 | Email: dldodds@garlandisd.net

Event Services Manager

Terrencia McBeath

Office: 972-487-4711 | Cell: 214-207-3455 | Email: tnmcbeath@garlandisd.net

Operations Manager

Blake Shelton

Office: 972-487-4716 | Cell: 214-876-2094 | Email: btshelto@garlandisd.net

CONTACT INFORMATION



Sales Manager

Brian Jackson-Major

Office: 972-487-4737 | Email: bjacksonmajor@garlandisd.net

Sales Representative

Tanner Cody

Office: 972-487-4723 | Email: tcody@garlandisd.net

Box Office Manager

April Shaw

Office: 972-487-4744 | Cell: 214-876-1269 | Email: adshaw@garlandisd.net

Assistant Box Office Coordinator

Darrell Thomas

Office: 972-487-4745 | Email: dethomas@garlandisd.net

Event Coordinators

Erika Hernandez

Office: 972-487-4717 | Cell: 214-497-7676 | Email: echernandez@garlandisd.net

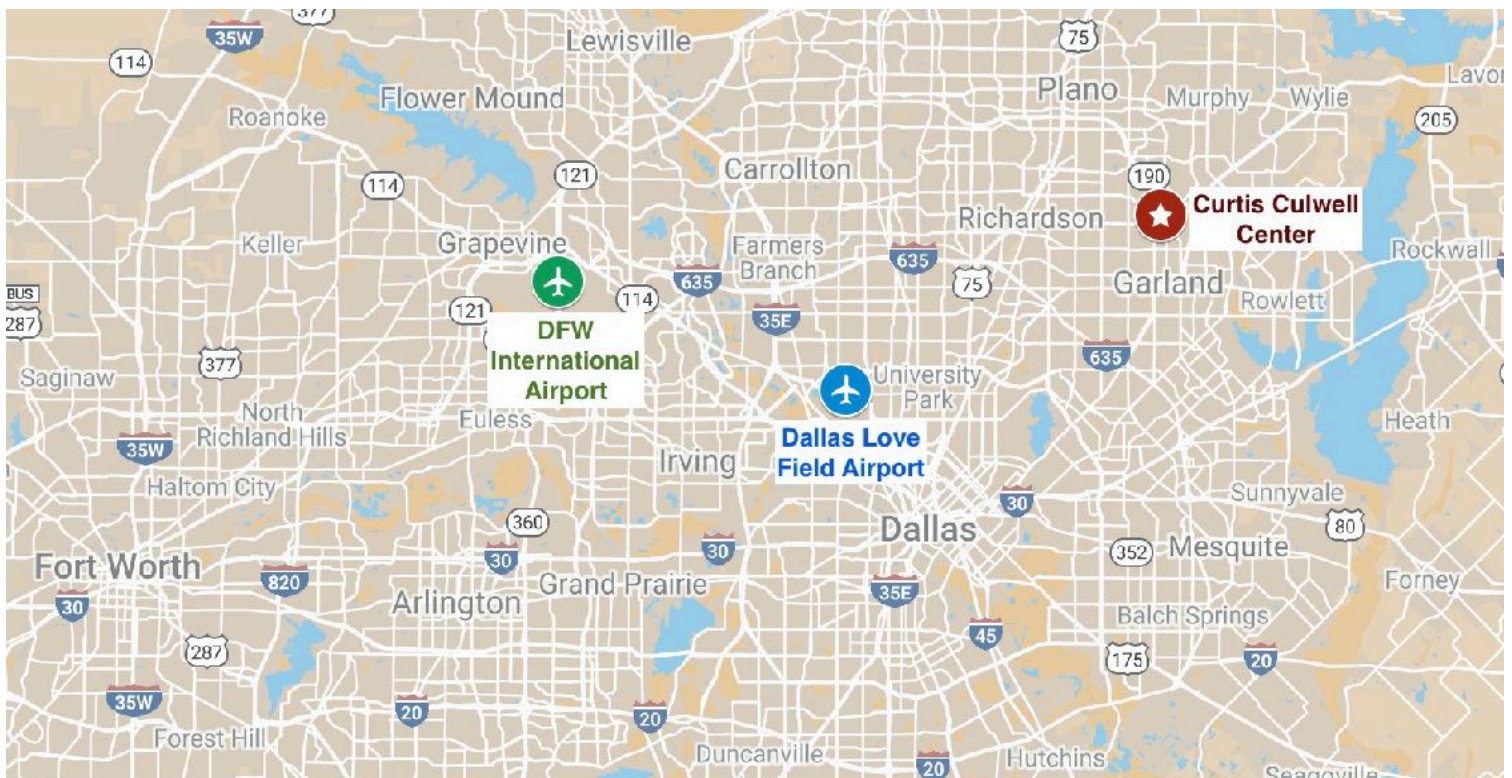
Lisa Allen

Office: 972-487-4706 | Cell: 214-878-7174 | Email: Lallen2@garlandisd.net

DIRECTIONS TO THE CCC



The Curtis Culwell Center is conveniently located near the intersection of North Garland Avenue and the President George Bush Turnpike (Hwy. 190) in northeastern Dallas County and is just minutes away from Richardson, Plano, Rowlett and Rockwall. We are approximately 30 minutes away from Dallas/Fort Worth International Airport and Dallas Love Field Airport.



PARKING INFORMATION



- Advance arrangements for show parking should be made with the Event Manager/Coordinator.
- A limited number of trucks and buses are permitted in the Loading Dock Area.
- Personal vehicle parking is not permitted in the Loading Dock Area or any CCC Parking Lots.
- Only permitted vehicles will be granted access to the CCC Parking Lots. Parking passes are required to be displayed at all times.
- All “local” Production Crew, Vendors and Sub-Contractors are required to park in pre-designated areas. Event Manager/Coordinator will provide that information. (Locations vary per event)



LOADING DOCKS

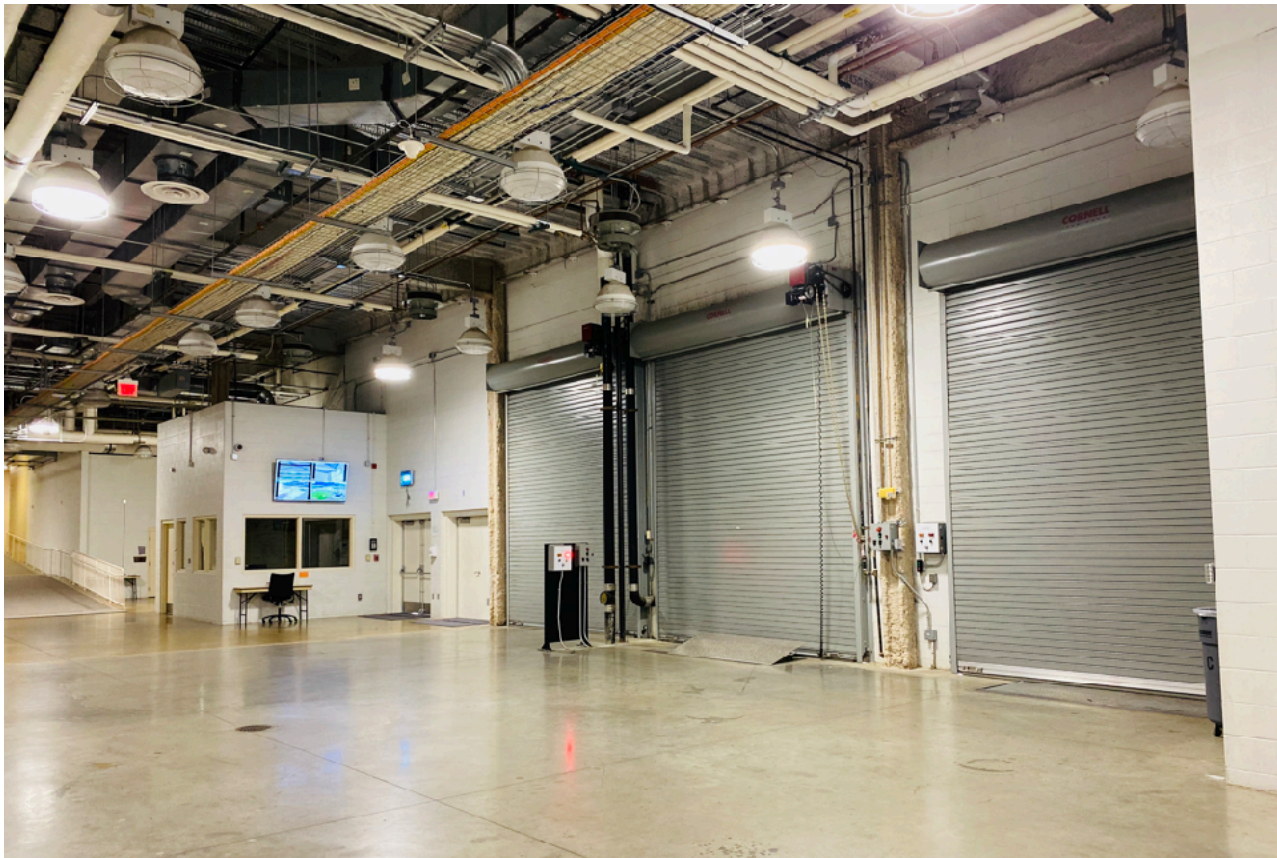


5,058 square feet equipped with two bays featuring lifts and 14' high by 12' wide doors. A third door also at 14' high by 12' wide serves as a ramped entrance for vehicle access.

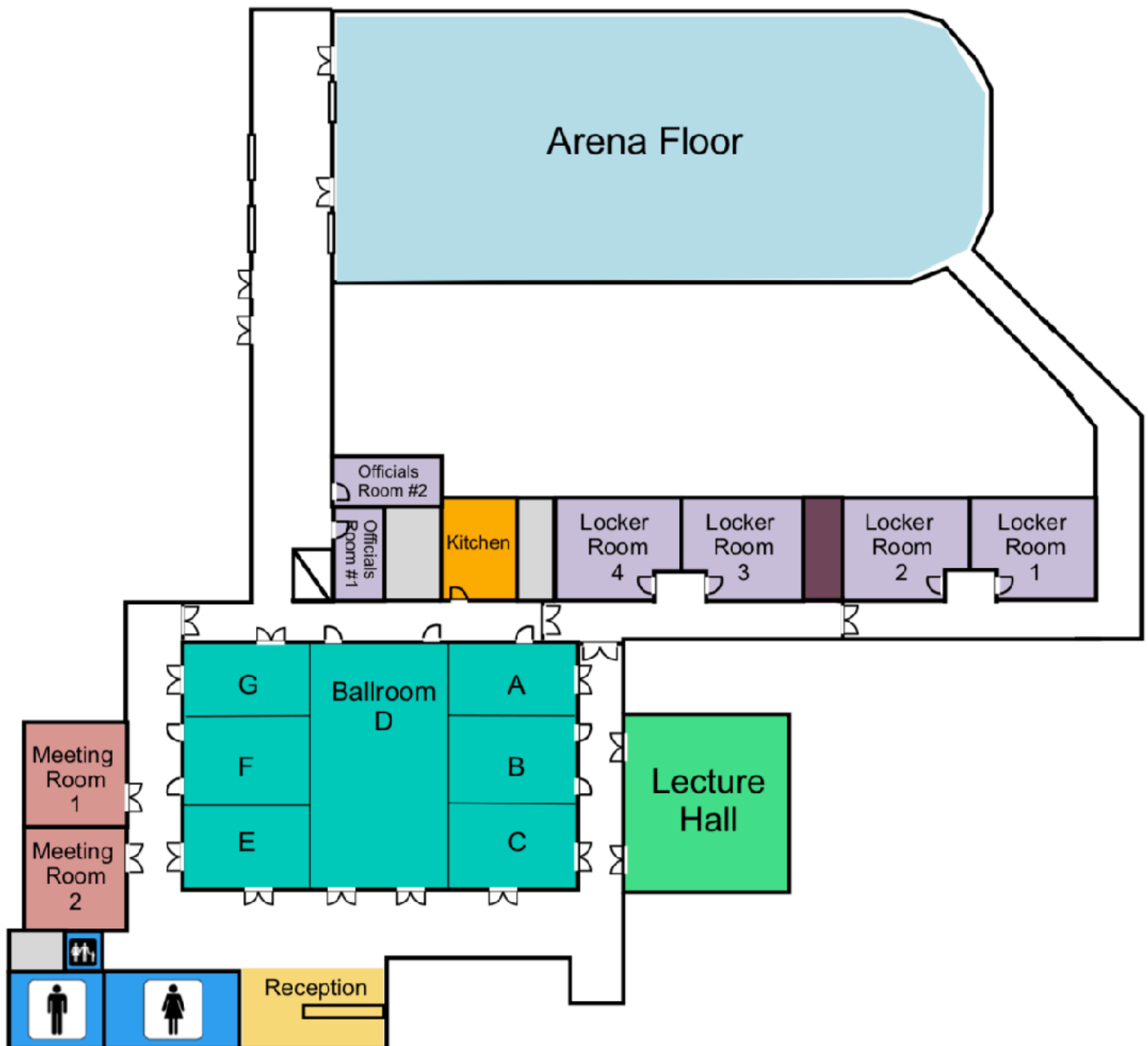
Three shore power hook-ups are located outside of the loading dock area.

Other features include:

- A security entrance
- Direct freight elevator access
- Smooth and level transition to and from Arena Floor
- Two 14' high by 12' wide doors into Arena from dock
- A ramped entrance to the Conference Center



BACKSTAGE LAYOUT



BACKSTAGE ROOMS



Room Name	Length	Width	Sq. Feet	Ceiling Height
Home Locker Room 1	23'	14'	2,035	10'-0"
Home Locker Room 2	23'	14'	2,035	10'-0"
Visitors Locker Room 3	23'	14'	2,035	10'-0"
Visitors Locker Room 4	23'	14'	2,035	10'-0"
Officials Locker Room 1	9'	10'	917	10'-0"
Officials Locker Room 2	9'	10'	917	10'-0"
Grand Ballroom (A-G)	69'	115'	8,064	14'-0"
*Ballroom A	23'	38'	889	14'-0"
*Ballroom B	23'	38'	889	14'-0"
*Ballroom C	23'	38'	889	14'-0"
*Ballroom D	69'	39'	2,728	14'-0"
*Ballroom E	23'	38'	889	14'-0"
*Ballroom F	23'	38'	889	14'-0"
*Ballroom G	23'	38'	889	14'-0"
Meeting Room 1	31'	33'	1,033	11'-10"
Meeting Room 2	31'	33'	1,033	11'-10"
Lecture Hall	58'	48'	2,691	13'-10"

All rooms subject to availability

* Rooms can be combined

LOCKER ROOMS



GRAND BALLROOM



MEETING ROOMS



LECTURE HALL



TECHNICAL SPECIFICATIONS



Arena Floor Dimensions:	85' x 201' (17,085 Sq. Ft)
Low Steel Height:	57'-5"
High Steel Height:	70'
High Steel Accessible:	Yes with lift
Beam spreads:	20' for the exception of the beam off the back wall at 10'
Limit:	5,000 lb. max per panel (Refer to page 17 for roof plot)
Overall Roof Capacity:	225,000 lb.
Floor/Circus Anchors:	Pre-existing only (35 available)
House PA Obstructions:	Refer to page 19 for precise location of House Speakers *Speakers may not be moved or altered in any way
Fire Code Regulations:	Need 6' clearance around perimeter of arena, from stage to staircases, and minimum of 10' clearance from back wall to upstage
Pyrotechnics:	Need 15' clearance from any sold seating *The licensee is responsible for securing proper permits
House Lights:	Full house LED lighting; Concourse by metal halide lamps *No significant theatrical lighting available
House Curtain:	Drops from ceiling at mid-floor, dividing arena floor and seating in half
Catering:	Approved Catering List available upon request.

RIGGING INFORMATION



Horizontal Safety Line System

The system will allow the worker(s) to conduct work on the ceiling area of the arena while being safely attached to either the Safety Line System or the Safety Tiebacks. The system is designed for human use only and shall never be overloaded nor utilized for an other purpose than fall arrest deterrent.

The Safety Tiebacks are designed for a maximum working load of 1,250 lbs. per pedestal. The Safety Line System was designed to have no more than 2 (two) workers attached per section.

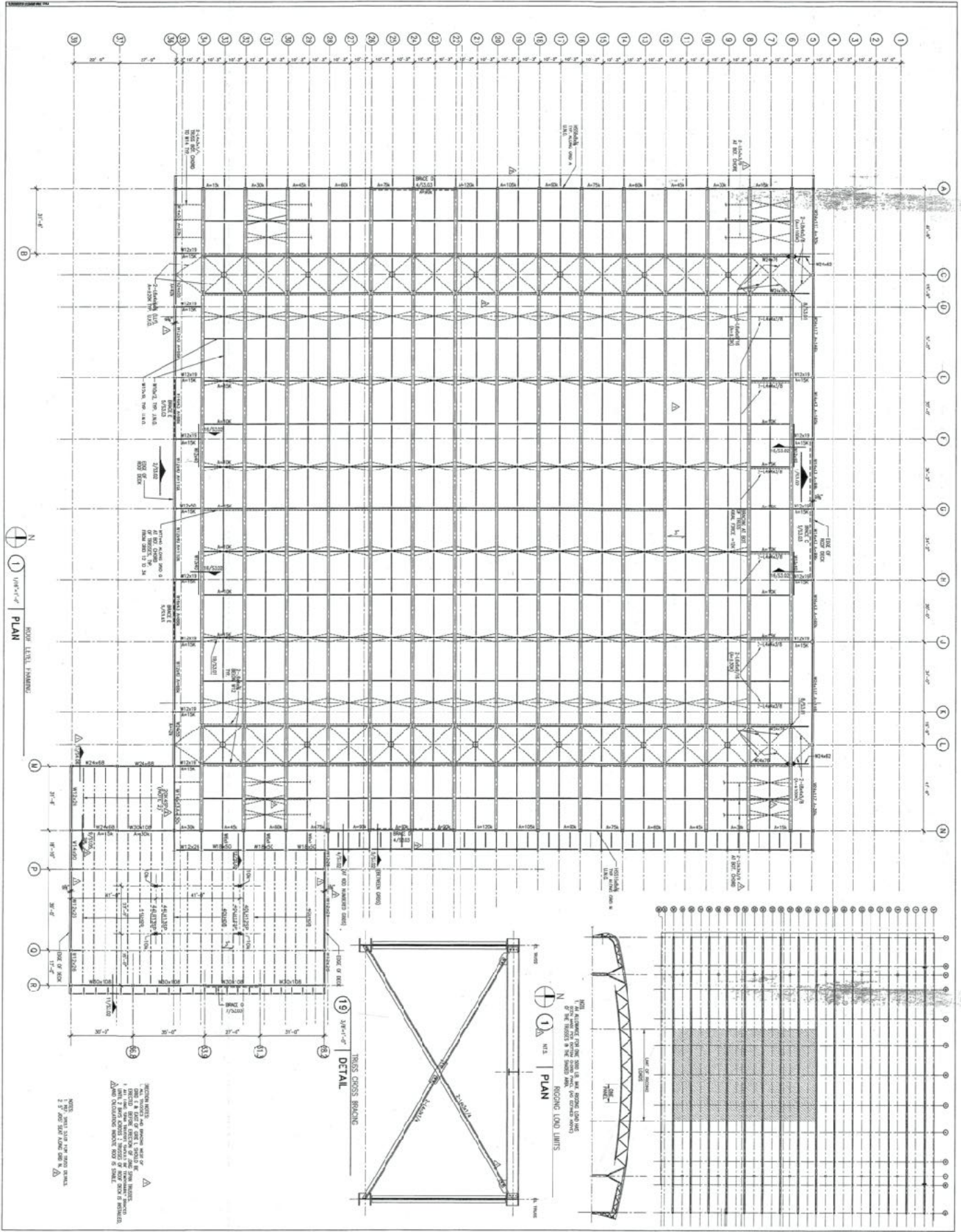
The additional Safety Lanyard is 3' in length and will act as an extension of the attachment point for the worker(s).

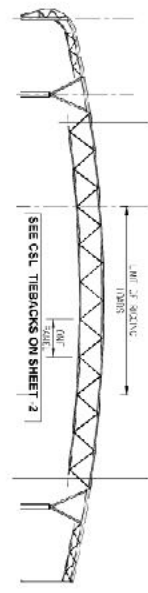
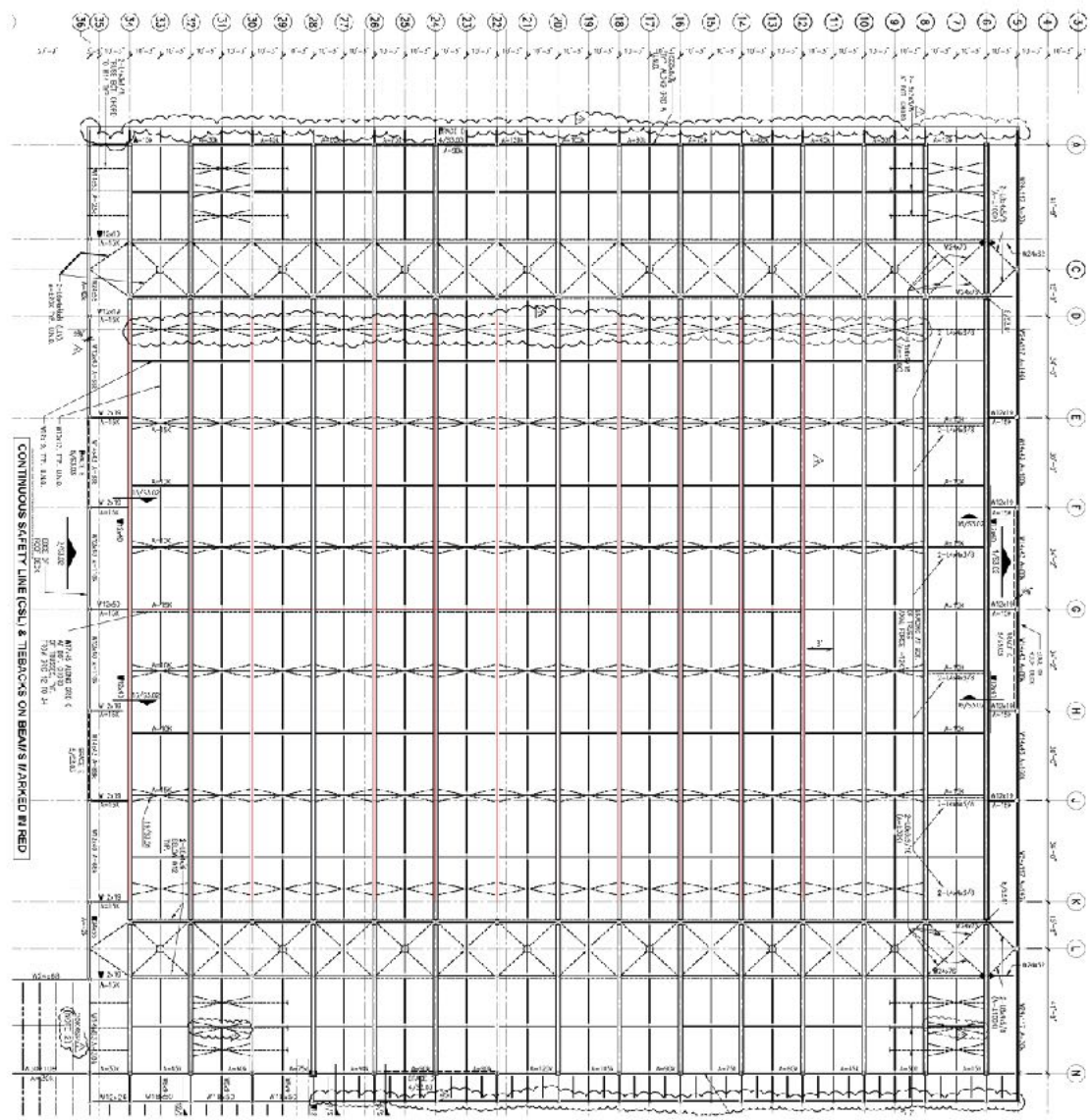
Safety Tieback: is considered a permanent attachment point for human usage only. This type of pedestal will allow the worker to safely work at a specific spot with tethered. ***Do not connect/hang any equipment or machinery to/from them.***

The Safety Line System will allow two (2) workers per section, to move around while working on any specific area. The workers will connect their personal harness safety line to the 3' lanyard.

IMPORTANT NOTE: Once all work has been completed, the lanyards must be properly secured to the closest cross member of the structure.

CCC Arena Roof Plot





ELECTRICAL REQUIREMENTS

1. SEE SHEET 2050-56 FOR TIEBACK DETAILS.

2. SEE SHEET 2050-57 FOR TIEBACK DETAILS.

3. SEE SHEET 2050-58 FOR TIEBACK DETAILS.

4. SEE SHEET 2050-59 FOR TIEBACK DETAILS.

5. SEE SHEET 2050-60 FOR TIEBACK DETAILS.

6. SEE SHEET 2050-61 FOR TIEBACK DETAILS.

7. SEE SHEET 2050-62 FOR TIEBACK DETAILS.

8. SEE SHEET 2050-63 FOR TIEBACK DETAILS.

9. SEE SHEET 2050-64 FOR TIEBACK DETAILS.

10. SEE SHEET 2050-65 FOR TIEBACK DETAILS.

11. SEE SHEET 2050-66 FOR TIEBACK DETAILS.

12. SEE SHEET 2050-67 FOR TIEBACK DETAILS.

13. SEE SHEET 2050-68 FOR TIEBACK DETAILS.

14. SEE SHEET 2050-69 FOR TIEBACK DETAILS.

15. SEE SHEET 2050-70 FOR TIEBACK DETAILS.

16. SEE SHEET 2050-71 FOR TIEBACK DETAILS.

17. SEE SHEET 2050-72 FOR TIEBACK DETAILS.

18. SEE SHEET 2050-73 FOR TIEBACK DETAILS.

19. SEE SHEET 2050-74 FOR TIEBACK DETAILS.

20. SEE SHEET 2050-75 FOR TIEBACK DETAILS.

21. SEE SHEET 2050-76 FOR TIEBACK DETAILS.

22. SEE SHEET 2050-77 FOR TIEBACK DETAILS.

23. SEE SHEET 2050-78 FOR TIEBACK DETAILS.

24. SEE SHEET 2050-79 FOR TIEBACK DETAILS.

25. SEE SHEET 2050-80 FOR TIEBACK DETAILS.

26. SEE SHEET 2050-81 FOR TIEBACK DETAILS.

27. SEE SHEET 2050-82 FOR TIEBACK DETAILS.

28. SEE SHEET 2050-83 FOR TIEBACK DETAILS.

29. SEE SHEET 2050-84 FOR TIEBACK DETAILS.

30. SEE SHEET 2050-85 FOR TIEBACK DETAILS.

31. SEE SHEET 2050-86 FOR TIEBACK DETAILS.

32. SEE SHEET 2050-87 FOR TIEBACK DETAILS.

33. SEE SHEET 2050-88 FOR TIEBACK DETAILS.

34. SEE SHEET 2050-89 FOR TIEBACK DETAILS.

35. SEE SHEET 2050-90 FOR TIEBACK DETAILS.

36. SEE SHEET 2050-91 FOR TIEBACK DETAILS.

Highrise Maintenance Systems, Inc.

2013 MAY STREET
FORT WORTH, TEXAS 76110
817-927-8711

2050-56

2050-57

2050-58

2050-59

2050-60

2050-61

2050-62

2050-63

2050-64

2050-65

2050-66

2050-67

2050-68

2050-69

2050-70

2050-71

2050-72

2050-73

2050-74

2050-75

2050-76

2050-77

2050-78

2050-79

2050-80

2050-81

2050-82

2050-83

2050-84

2050-85

2050-86

2050-87

2050-88

2050-89

2050-90

2050-91



SHOP WELD ELECT. ER 70S-6 YIELD = 62KSI
FIELD WELD ELECT. EXCALIBUR 7018 MR
YIELD = 62 KSI (AS WELDED)

HSS SQR 4" TW=0.5 FOR PDS
HSS SQR 3" TW=0.375 FOR TB
ASTM A500 GR-B YIELD 46 KSI

BUILDING LOADS:
Fcs = 900 lbs per person
Fcs / 0' 3 = 2700 Lbs
FTB = 1250 Lbs
Equipment and B'g. shall resist 4 times of this force.

NOTE:
ALL WELDS 1" FILLET U.T.O

¹/₂" (6X19 IWRC) STEEL WIRE ROPE MIN. BRK.
STRENGTH = 23000 LBS

B-46 3/4" D-RING SEE PRODUCT DATA FOR
DETAIL

IN CSL = 120

PDS=HSS SQR. 4" Tw=0.5
TBS=HSS SQR. 3" Tw=.375
ASTM A500 GR=B
YIELD= 46 KSI

PDS & TB ON
CENTER W SHAPE
RUNNING NORMAL
TO HORIZONTAL LINE.
MAX. PDS SPACIN=30 FT.
TBS SPACING=20 FT. TYP.
SEE SHEET #4

1. **NAME OF THE COMPANY:** Garland Die
 2. **ADDRESS:** 10000 13th Avenue
 3. **CITY:** Garland, Texas
 4. **STATE:** Texas
 5. **ZIP:** 75042
 6. **DATE:** 10/2/83
 7. **BY:** Garland Die
 8. **FOR:** Garland Die
 9. **REMARKS:** Garland Die
 10. **DATE:** 10/2/83
 11. **BY:** Garland Die
 12. **FOR:** Garland Die
 13. **REMARKS:** Garland Die
 14. **DATE:** 10/2/83
 15. **BY:** Garland Die
 16. **FOR:** Garland Die
 17. **REMARKS:** Garland Die
 18. **DATE:** 10/2/83
 19. **BY:** Garland Die
 20. **FOR:** Garland Die
 21. **REMARKS:** Garland Die
 22. **DATE:** 10/2/83
 23. **BY:** Garland Die
 24. **FOR:** Garland Die
 25. **REMARKS:** Garland Die
 26. **DATE:** 10/2/83
 27. **BY:** Garland Die
 28. **FOR:** Garland Die
 29. **REMARKS:** Garland Die
 30. **DATE:** 10/2/83
 31. **BY:** Garland Die
 32. **FOR:** Garland Die
 33. **REMARKS:** Garland Die
 34. **DATE:** 10/2/83
 35. **BY:** Garland Die
 36. **FOR:** Garland Die
 37. **REMARKS:** Garland Die
 38. **DATE:** 10/2/83
 39. **BY:** Garland Die
 40. **FOR:** Garland Die
 41. **REMARKS:** Garland Die
 42. **DATE:** 10/2/83
 43. **BY:** Garland Die
 44. **FOR:** Garland Die
 45. **REMARKS:** Garland Die
 46. **DATE:** 10/2/83
 47. **BY:** Garland Die
 48. **FOR:** Garland Die
 49. **REMARKS:** Garland Die
 50. **DATE:** 10/2/83
 51. **BY:** Garland Die
 52. **FOR:** Garland Die
 53. **REMARKS:** Garland Die
 54. **DATE:** 10/2/83
 55. **BY:** Garland Die
 56. **FOR:** Garland Die
 57. **REMARKS:** Garland Die
 58. **DATE:** 10/2/83
 59. **BY:** Garland Die
 60. **FOR:** Garland Die
 61. **REMARKS:** Garland Die
 62. **DATE:** 10/2/83
 63. **BY:** Garland Die
 64. **FOR:** Garland Die
 65. **REMARKS:** Garland Die
 66. **DATE:** 10/2/83
 67. **BY:** Garland Die
 68. **FOR:** Garland Die
 69. **REMARKS:** Garland Die
 70. **DATE:** 10/2/83
 71. **BY:** Garland Die
 72. **FOR:** Garland Die
 73. **REMARKS:** Garland Die
 74. **DATE:** 10/2/83
 75. **BY:** Garland Die
 76. **FOR:** Garland Die
 77. **REMARKS:** Garland Die
 78. **DATE:** 10/2/83
 79. **BY:** Garland Die
 80. **FOR:** Garland Die
 81. **REMARKS:** Garland Die
 82. **DATE:** 10/2/83
 83. **BY:** Garland Die
 84. **FOR:** Garland Die
 85. **REMARKS:** Garland Die
 86. **DATE:** 10/2/83
 87. **BY:** Garland Die
 88. **FOR:** Garland Die
 89. **REMARKS:** Garland Die
 90. **DATE:** 10/2/83
 91. **BY:** Garland Die
 92. **FOR:** Garland Die
 93. **REMARKS:** Garland Die
 94. **DATE:** 10/2/83
 95. **BY:** Garland Die
 96. **FOR:** Garland Die
 97. **REMARKS:** Garland Die
 98. **DATE:** 10/2/83
 99. **BY:** Garland Die
 100. **FOR:** Garland Die
 101. **REMARKS:** Garland Die
 102. **DATE:** 10/2/83
 103. **BY:** Garland Die
 104. **FOR:** Garland Die
 105. **REMARKS:** Garland Die
 106. **DATE:** 10/2/83
 107. **BY:** Garland Die
 108. **FOR:** Garland Die
 109. **REMARKS:** Garland Die
 110. **DATE:** 10/2/83
 111. **BY:** Garland Die
 112. **FOR:** Garland Die
 113. **REMARKS:** Garland Die
 114. **DATE:** 10/2/83
 115. **BY:** Garland Die
 116. **FOR:** Garland Die
 117. **REMARKS:** Garland Die
 118. **DATE:** 10/2/83
 119. **BY:** Garland Die
 120. **FOR:** Garland Die
 121. **REMARKS:** Garland Die
 122. **DATE:** 10/2/83
 123. **BY:** Garland Die
 124. **FOR:** Garland Die
 125. **REMARKS:** Garland Die
 126. **DATE:** 10/2/83
 127. **BY:** Garland Die
 128. **FOR:** Garland Die
 129. **REMARKS:** Garland Die
 130. **DATE:** 10/2/83
 131. **BY:** Garland Die
 132. **FOR:** Garland Die
 133. **REMARKS:** Garland Die
 134. **DATE:** 10/2/83
 135. **BY:** Garland Die
 136. **FOR:** Garland Die
 137. **REMARKS:** Garland Die
 138. **DATE:** 10/2/83
 139. **BY:** Garland Die
 140. **FOR:** Garland Die
 141. **REMARKS:** Garland Die
 142. **DATE:** 10/2/83
 143. **BY:** Garland Die
 144. **FOR:** Garland Die
 145. **REMARKS:** Garland Die
 146. **DATE:** 10/2/83
 147. **BY:** Garland Die
 148. **FOR:** Garland Die
 149. **REMARKS:** Garland Die
 150. **DATE:** 10/2/83
 151. **BY:** Garland Die
 152. **FOR:** Garland Die
 153. **REMARKS:** Garland Die
 154. **DATE:** 10/2/83
 155. **BY:** Garland Die
 156. **FOR:** Garland Die
 157. **REMARKS:** Garland Die
 158. **DATE:** 10/2/83
 159.

800-222-2222 • 2000-2001
 (800) 222-2222 • 2000-2001
 800-222-2222 • 2000-2001

is pregnancy and abortion, related to about 80% of cases.

CABLES, TRAIL
 2020-55
 2020-55
 2020-55



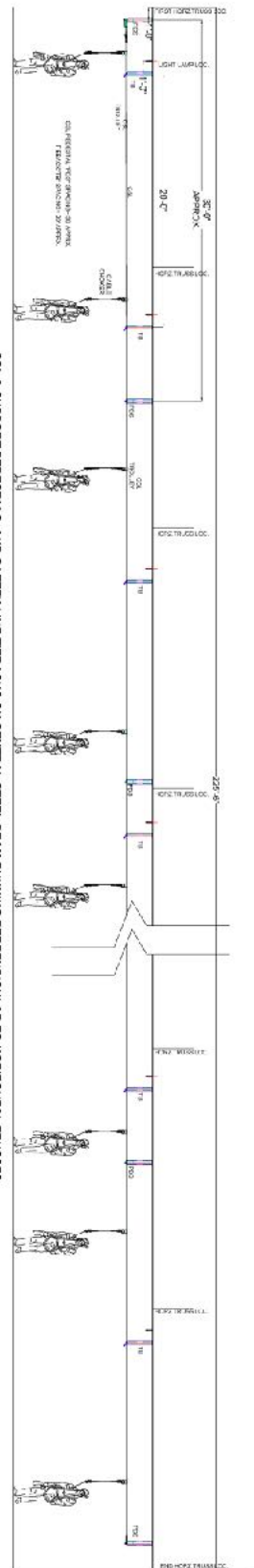
Highrise Maintenance Systems, Inc.

3313 MYN STREET
FORT WORTH, TEXAS 76110
817-927-8711

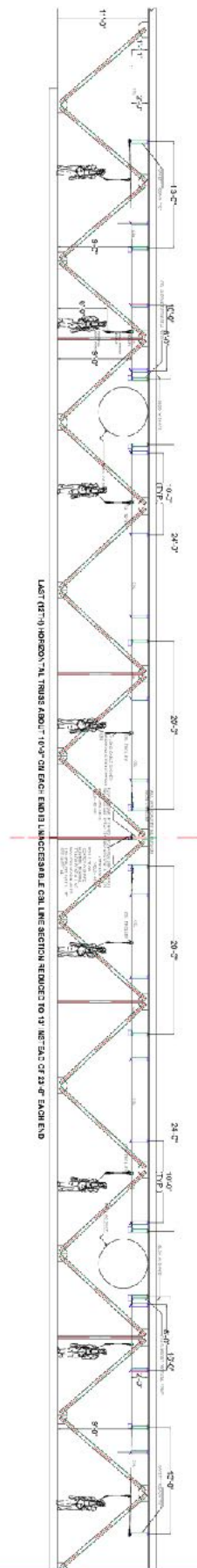
NO LOANED OR
RENTED EQUIPMENT



3313 PAY STREET
FLR. WUTH, TEXAS 76110
817-927-8711



CSL & SUPPORT PEDESTALS AND SAFETY LINE TIEBACKS ON CENTRAL STEEL BEAM RUNNING PERPENDICULAR TO HORIZONTAL TRUSSES

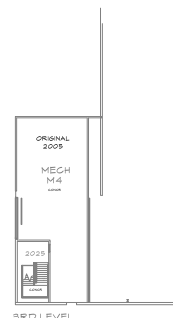
[illegible]

© 2000 by The McGraw-Hill Companies, Inc.



Highrise Maintenance Systems, Inc.

3313 MAY STREET
PORT WORTH, TEXAS 76100
817-327-8711



N
1 N.T.S. **RIGGING LOAD LIMITS (SEE HATCHED AREA ON ROOF PLAN)**
PLAN

23



POWER AVAILABILITY



Location	Type	Connection	QTY.
Dock Area (Backstage)	400A/3Ø IG	Cam-Loc	1
Dock Area (Backstage)	400A / 3Ø	Cam-Loc	1
Dock Area (Backstage)	200A / 3Ø	Cam-Loc	1
Vomitory (Opposite end)	400A / 3Ø IG	Cam-Loc	1
Vomitory (Opposite end)	200A / 3Ø	Cam-Loc	1
Arena Floor Ground Boxes	20A	Quad Boxes	4
Arena Wall Outlets	20A	Duplex	10
Concourse	60A	Various	1
Concourse Wall Outlets	20A	Duplex	28

***Limited amount of cable ramps available**

EQUIPMENT



Staging

- StageRight 4'x8' decks
- 24" - 48" in height
- Maximum stage size: 60' wide x 48' deep
- Stage skirting and railing available upon request

Tables

- 6 ft. Banquet
- 8 ft. Banquet
- 5 ft. Round
- 6 ft. Round
- Linens and skirting available (Black)

Seating

- Lockable Folding Chairs (Black/Cushioned)

ClearCom

- (2) 2 channel belt pack units
- (6) single channel belt pack units
- (8) single ear head sets
- (2) 2 channel cable adaptors

Miscellaneous

- Barricades (Standard bicycle racks)
- Pipe/Drape (Black - 8 ft. and 10 ft.)
- Flat Bed Carts

***Equipment costs may apply**

***All equipment is subject to availability**

SEATING CONFIGURATIONS

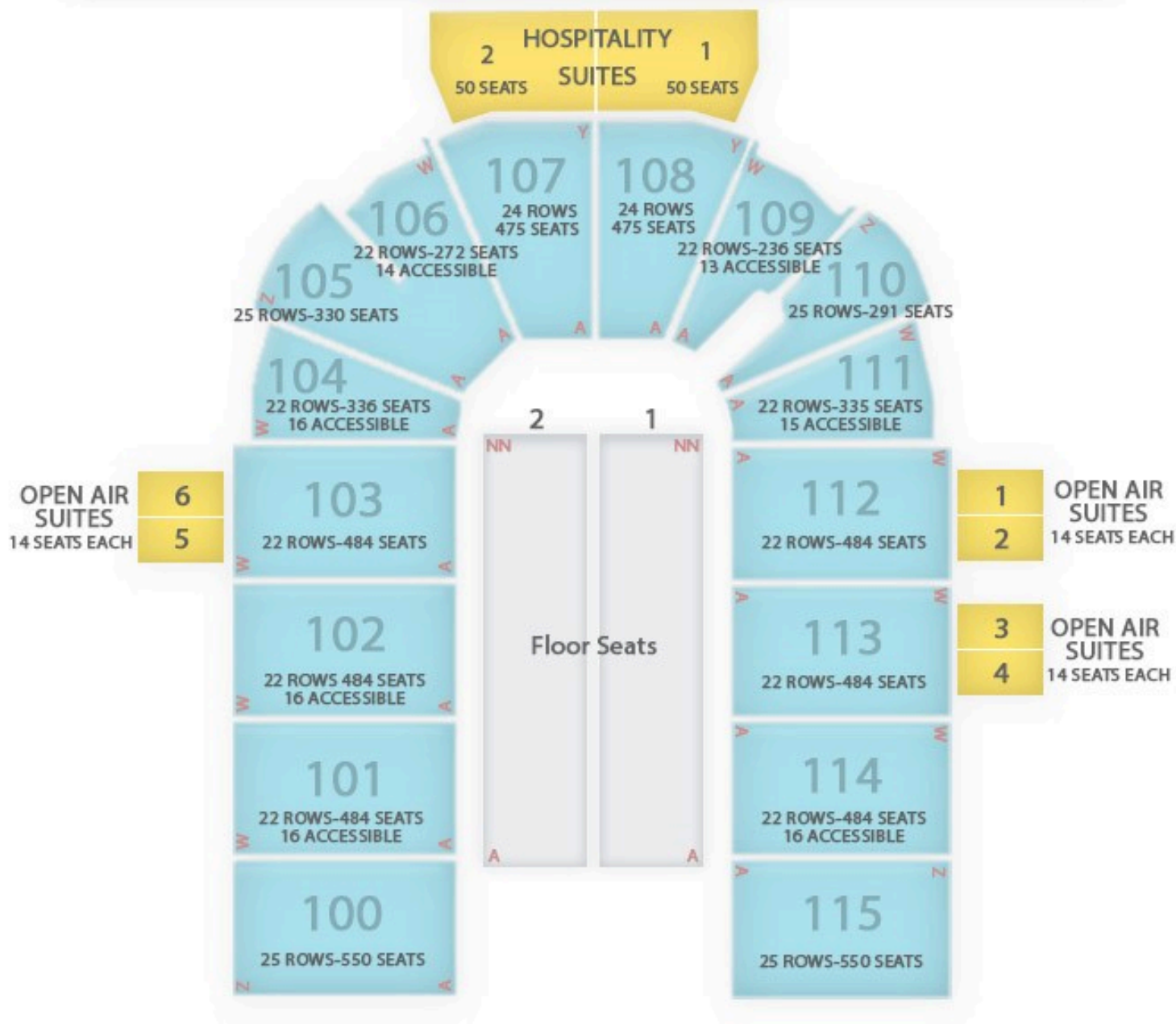


Configuration	Seat Count
Full House End Stage	8380
Full House 360°	8020
3/4 House End Stage	5987
1/2 House End Stage	4163
Basketball	7086
Boxing/MMA/Wrestling	7600

*These seat counts are estimates only. Seat counts are subject to change, based on individual show requirements. Floor plans are unique for each event.

CURTIS CULWELL CENTER

SEATING CHART

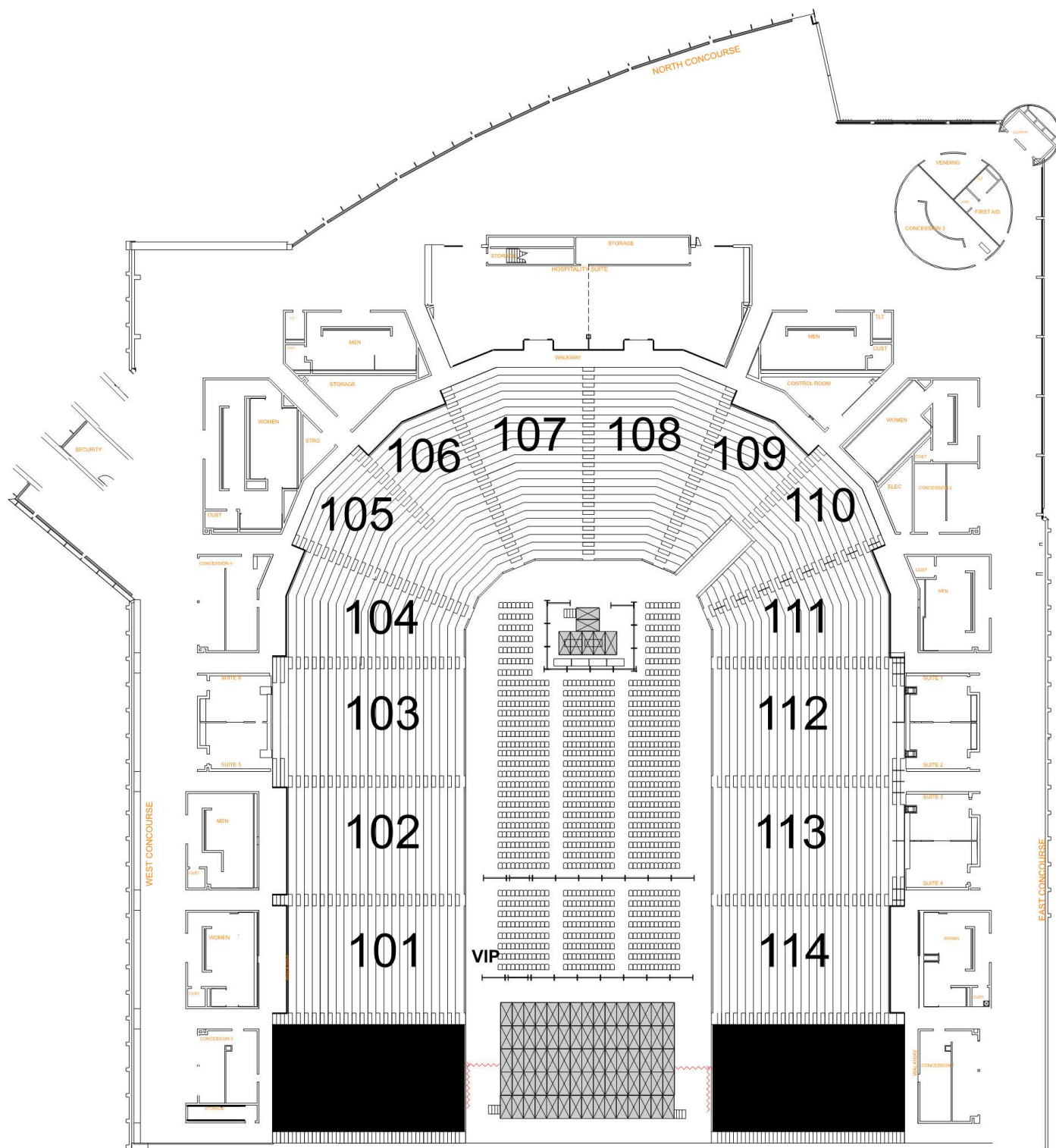


Full House Capacity=8564
Including Suites (184) & Accessible

Half House Capacity(Sections 103-112)=3932
Including Suites (156) & Accessible

Section Seating=6860
6754 seats 106 Accessible

Floor Capacity=1520
Floor 1: 38 Rows 20 Seats
Floor 2: 38 Rows 20 Seats



Full House with End Stage

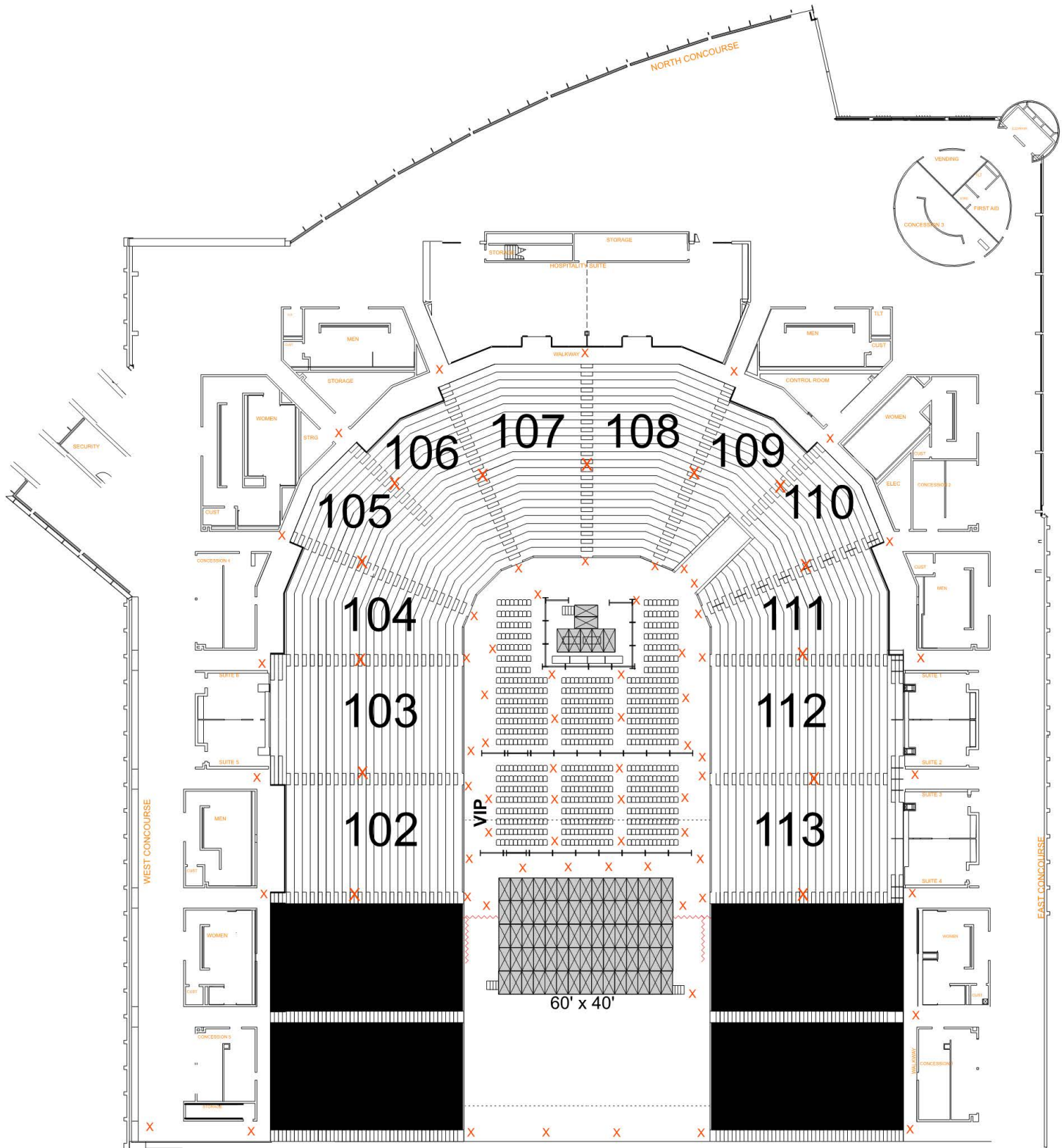
Capacity: 6,844

Bowl: 5,654

Floor: 1,084

ADA: 106

*Capacity subject to change based on show requirements and sight-lines



3/4 House with Stage

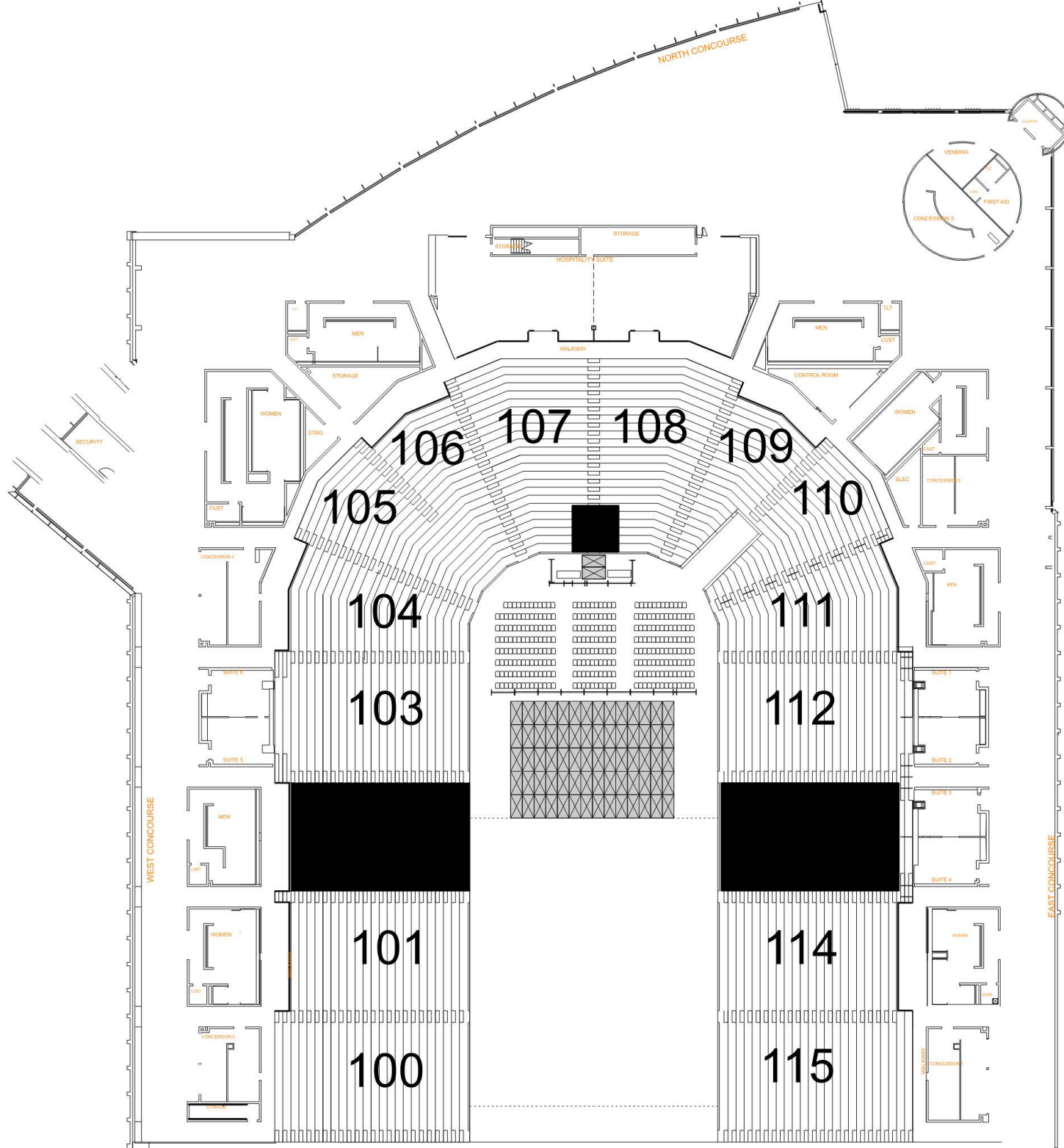
Capacity: 5,540

Bowl: 4,686

Floor: 780

ADA: 74

*Capacity subject to change based on show requirements and sight-lines



1/2 House with Stage

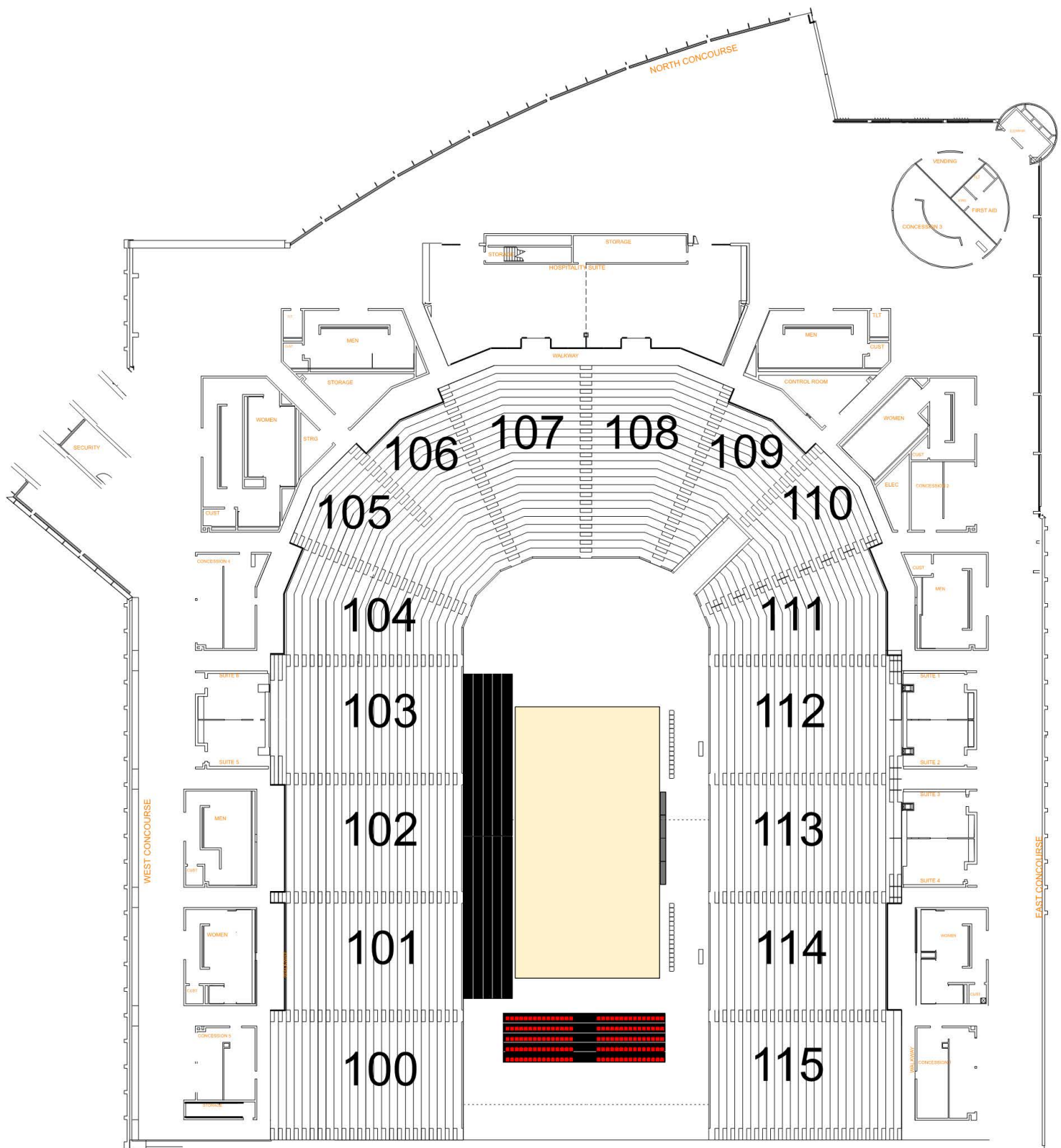
Capacity: 4,176

Bowl: 3,718

Floor: 400

ADA: 58

*Capacity subject to change based on show requirements and sight-lines



Basketball/Volleyball

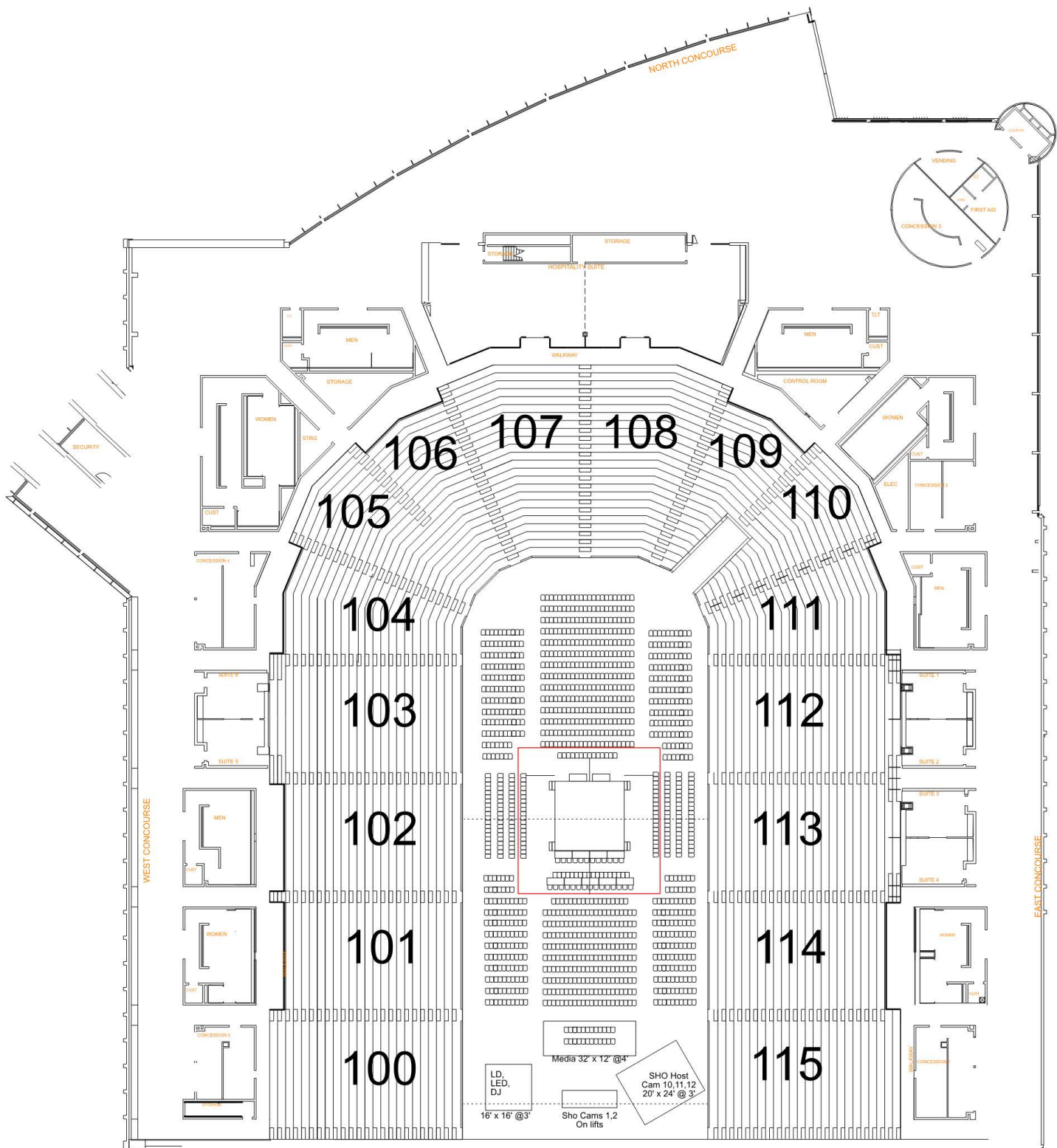
Capacity: 6,896

Bowl: 6,754

Floor: 36

ADA: 106

*Capacity subject to change based on show requirements and sight-lines



MMA/Wrestling/Boxing

Capacity: 7,768

Bowl: 6,754

Floor: 908

ADA: 106

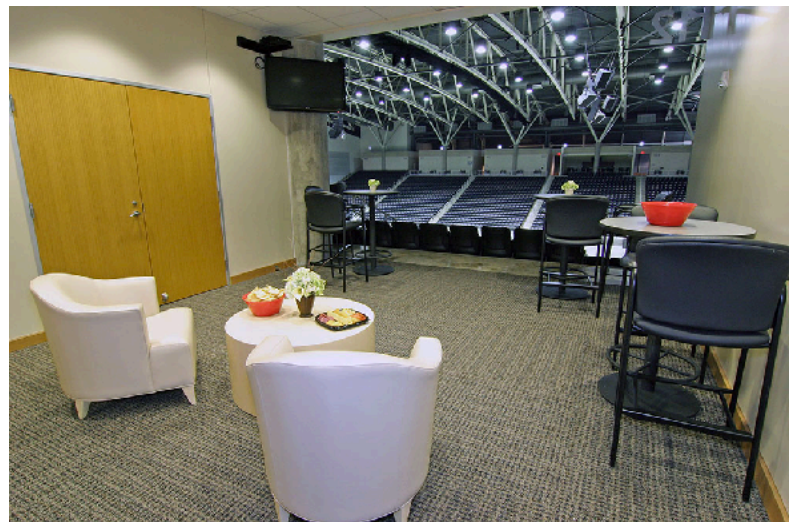
*Capacity subject to change based on show requirements and sight-lines

ARENA VIEW SUITES



Six individual open-air suites overlook the Arena for corporate meetings or entertaining. Each suite has a hospitality area and fourteen Arena seats immediately adjacent for guest use during shows. The suites can be paired for larger groups. There are four rooms on the east side and two rooms on the west side.

*Air-suites subject to availability.



CONCOURSE



The Curtis Culwell Center 18,000+ square foot, panoramic view, upper concourse has become a favorite entertaining spot. The unique area allows arena users to set-up merchandise areas, sponsorship activations, informations booths, etc.

THE WEST PLAZA

Located on the main concourse of the CCC, The West Plaza is a premier spot to sip, dine and socialize. This open lounge area offers bars, cocktail tables and comfortable seating with conveniently located 70" screen TV's.



LOCAL INFORMATION



ACCOMMODATIONS

Hyatt Place Dallas/Garland/Richardson

5101 N President George Bush Turnpike
Garland, TX 75040
Phone Number: 972-414-3500
Approx. distance - 0.2 mile
[Hotel website](#)

TRU by Hilton Garland Richardson

5055 N President George Bush Turnpike
Garland, TX 75040
Phone Number: 972-272-0745
Approx. distance - 0.3 mile
[Hotel website](#)

Holiday Inn Dallas-Garland

5110 N President George Bush Turnpike
Garland, TX 75044
Phone Number: 972-495-1144
Approx. distance - 1 mile
[Hotel website](#)

La Quinta Inn & Suites by Wyndham Dallas Northeast-Arboretum

1310 Marketplace Dr.
Garland, TX 75041
Phone Number: 972-685-5458
Approx. distance - 8 miles
[Hotel website](#)

Holiday Inn Express & Suites Garland E

4412 Bass Pro Dr.
Garland, TX 75043
Phone Number: 972-203-5700
Approx. distance - 12 miles
[Hotel website](#)

RESTAURANTS

On The Border Mexican Grill & Cantina

4970 N President George Bush Turnpike
Garland, TX 75040
Phone Number: 972-372-0110
Approx. distance - 1.5 miles

Buffalo Wild Wings

5125 N President George Bush Turnpike, Ste
100 Garland, TX 75040
Phone Number: 972-414-2999
Approx. distance - 0.3 mile

Cheddar's Scratch Kitchen

5445 N President George Bush Turnpike
Garland, TX 75044
Phone Number: 972-495-1200
Approx. distance - 0.8 mile

Outback Steakhouse

4902 N President George Bush Turnpike
Garland, TX 75040
Phone Number: 972-495-3699
Approx. distance - 1 mile

Texas Roadhouse

5012 N President George Bush Turnpike
Garland, TX 75040
Phone Number: 972-495-0417
Approx. distance - 1 mile

Olive Garden

4840 N President George Bush Turnpike
Garland, TX 75040
Phone Number: 972-530-8102
Approx. distance - 1 mile

For a full list of local hotels and restaurants please visit: <https://www.visitgarlandtx.com/>

LOCAL INFORMATION



EQUIPMENT RENTALS

SunBelt Rentals

3720 Forest Lane
Garland, TX 75042
Phone Number: 972-487-5959
Contact: Ryan Medders
Email: pcm277@sunbeltrentals.com
Website: <https://www.sunbeltrentals.com/>

United Rentals

2809 W Kingsley Road
Garland, TX 75041
Phone Number: 972-278-1761
Contact: Phillip Myers pmyers@ur.com
Website: <https://www.unitedrentals.com/>

Dallas Stage Scenery Co.

3917 Willow Street
Dallas, TX 75226
Phone Number: 214-821-0002
Email: contact@dallasstage.com
Website: <https://www.dallasstage.com/>

Gemini Stage Lighting & Equipment Co. Inc.

10218 Miller Road
Dallas, TX 75238
Phone Number: 214-341-4822
Email: sales@geminilsv.com
Website: <http://geminilsv.com/>

Herc Rental

10966 Harry Hines Blvd.
Dallas, TX 75220
Phone Number: 214-232-9320
Contact: Rick Castleman
Email: rick.castleman@hercrentals
Website: www.hercrentals.com

PRODUCTION/LABOR

Rhino Texas, LLC

17687 Telge Road
Cypress, TX 77429
Phone Number: 281-469-8188
Email: texas@rhinostaging.com
Website: <http://www.rhinostaging.com/>

LD Systems

8721 Forney Road
Dallas, TX 75227
Phone Number: 972-686-4488
Email: tdowdy@ldsystems.com
Website: <https://ldsystems.com/>

Production & Rigging Resources Inc. "ProRig"

4906 Sharp Street
Dallas, TX 75427
Phone Number: 214-350-6050
Email: labor@prorig.com
Website: www.Prorig.com

Upstage Center Inc.

3302 Old Alvin Road Ste. A
Pearland, TX 77581
Phone Number: 9281-412-6600
Email: info@upstageusa.com
Website: <https://www.upstagecenter.com/>

Oliver Brother's Productions

2132 113th St.
Grand Prairie, TX 75050
Contact: Roland (Roy) Oliver: 817-773-6019
Contact: Charles (Chuck) Oliver: 817-773-7032
Email: roy@oliverbros.com; chuck@oliverbros.com
Website: www.Oliverbros.com

The licensee is responsible for securing all equipment /labor and associated costs.